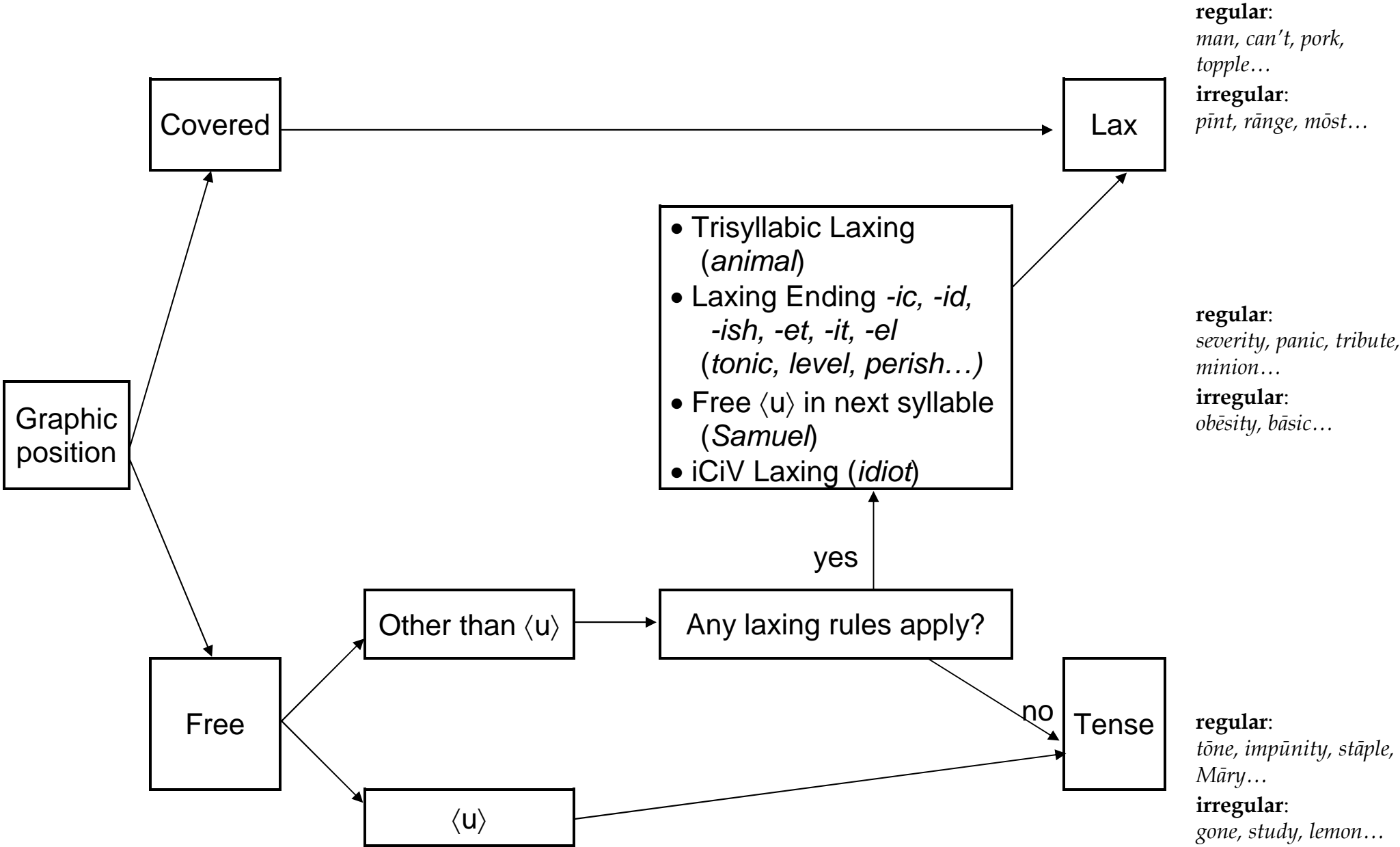


**Overview of the Letter-to-Sound Correspondence Rules for stressed single vowel letters — Cser**



**regular:**  
*man, can't, pork, topple...*  
**irregular:**  
*pint, range, most...*

**regular:**  
*severity, panic, tribute, minion...*  
**irregular:**  
*obesity, basic...*

**regular:**  
*tone, impunity, staple, Mary...*  
**irregular:**  
*gone, study, lemon...*